

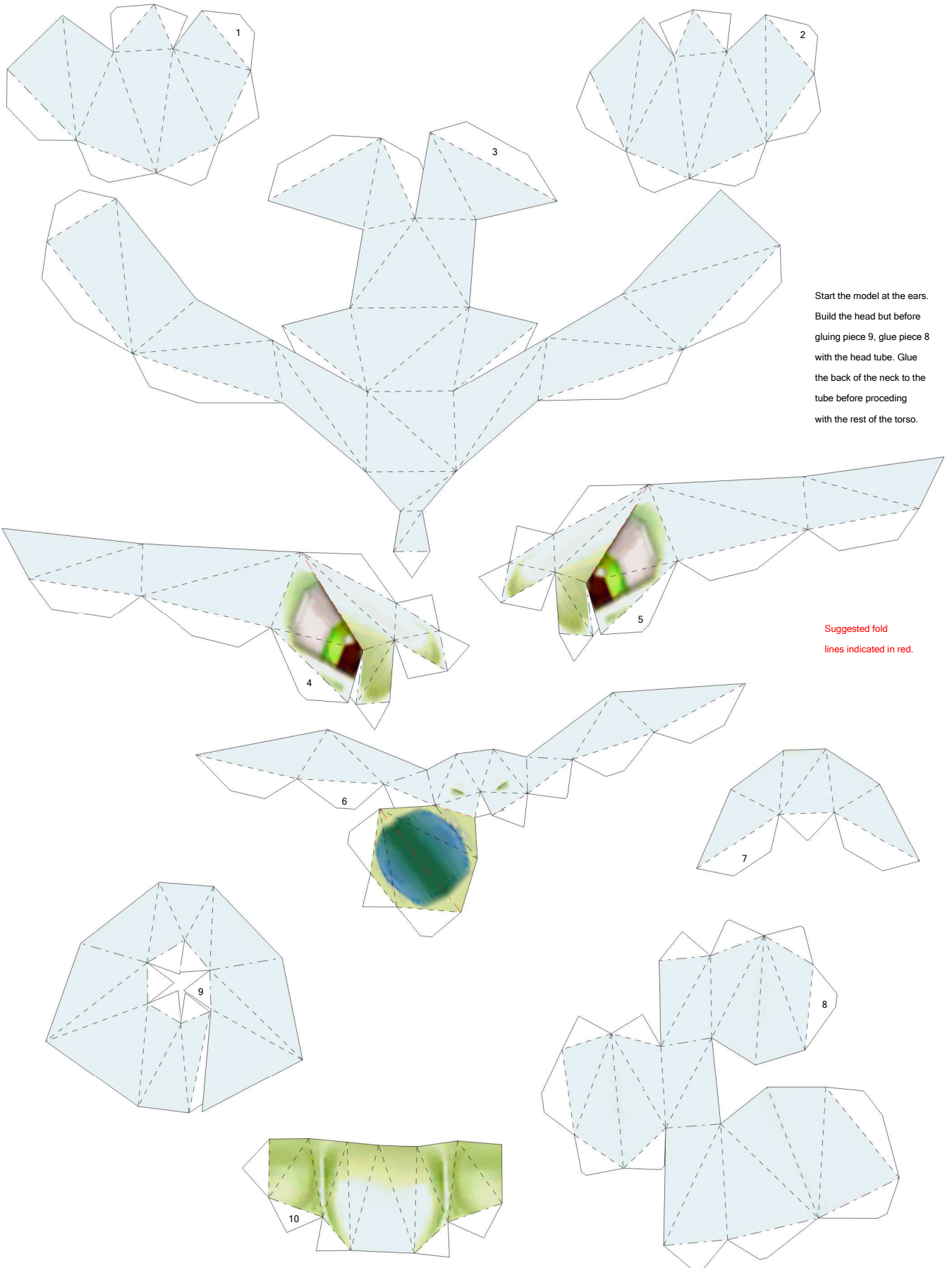


# Mewtwo

By Brandon

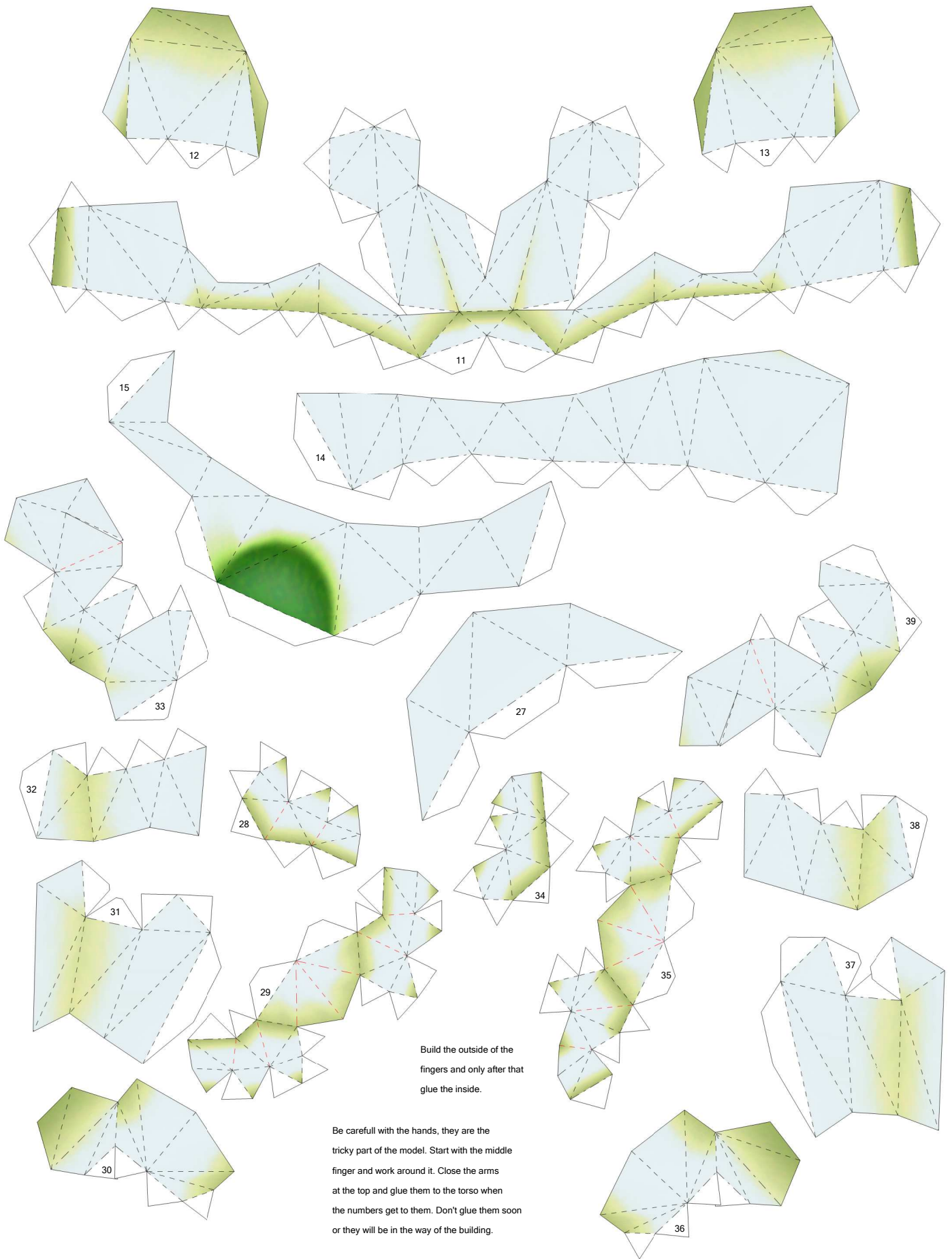
Build by Luis





Start the model at the ears.  
 Build the head but before  
 gluing piece 9, glue piece 8  
 with the head tube. Glue  
 the back of the neck to the  
 tube before proceeding  
 with the rest of the torso.

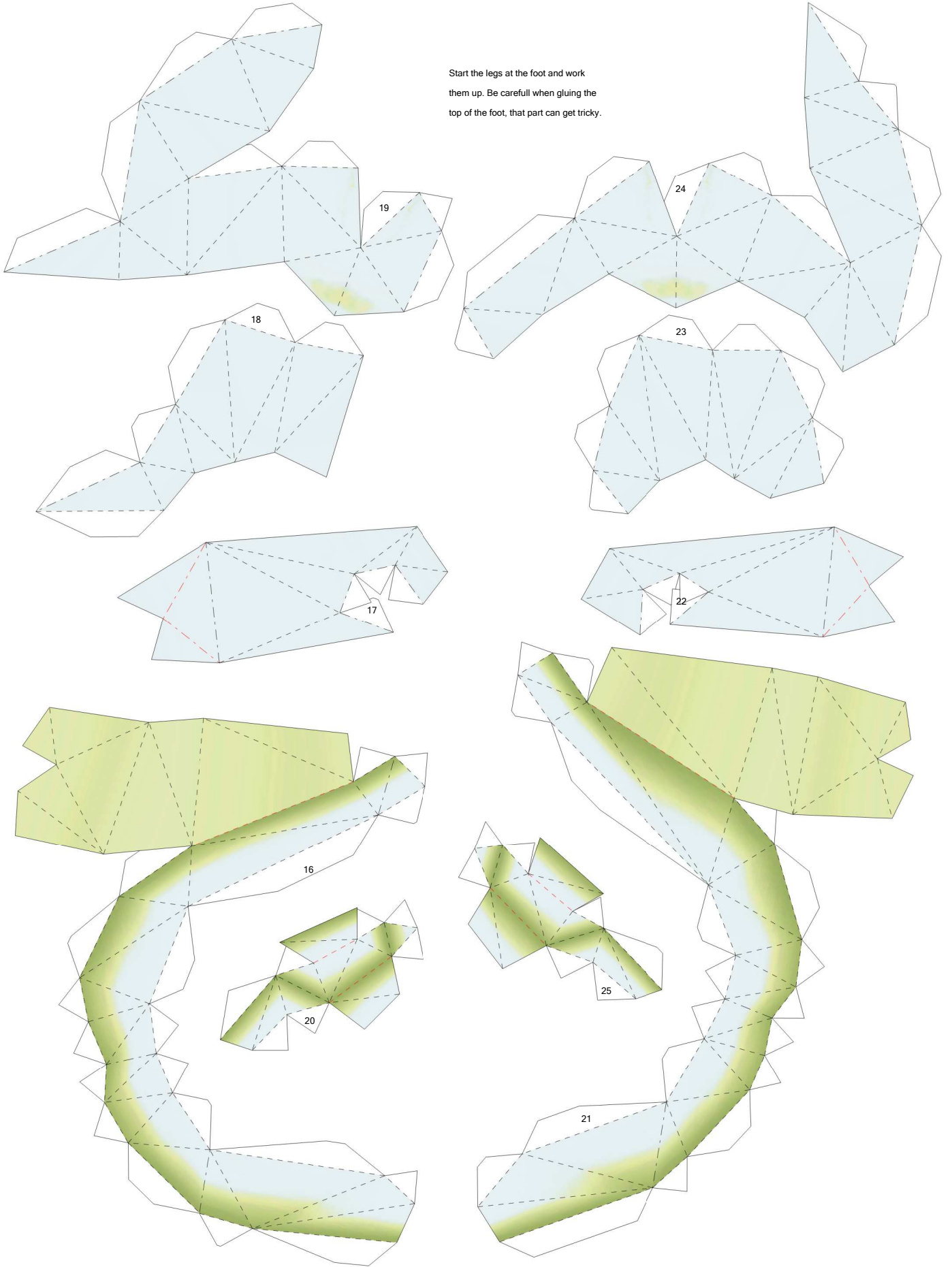
Suggested fold  
 lines indicated in red.

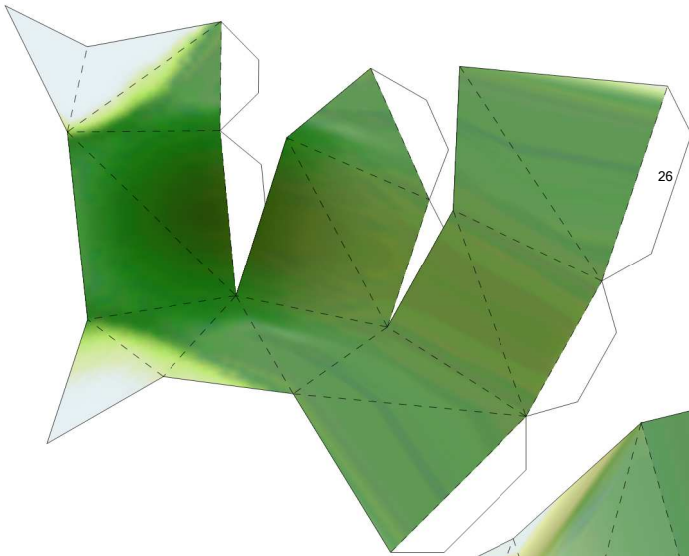


Build the outside of the fingers and only after that glue the inside.

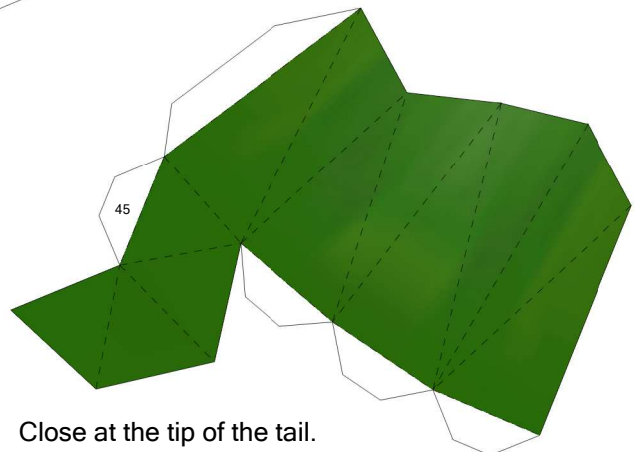
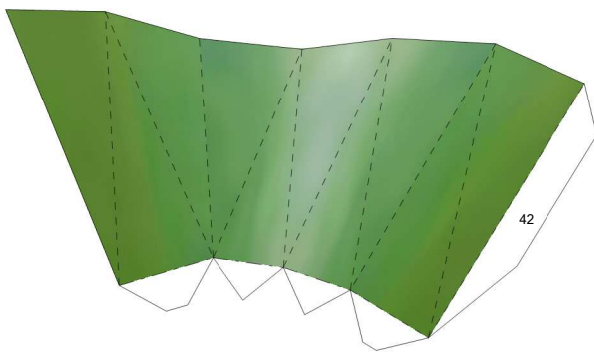
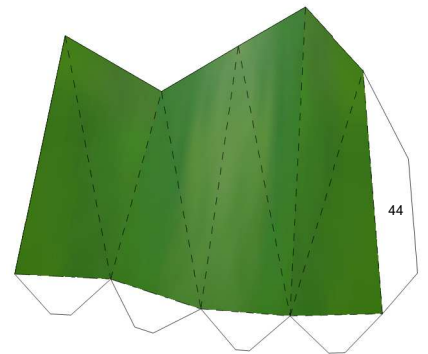
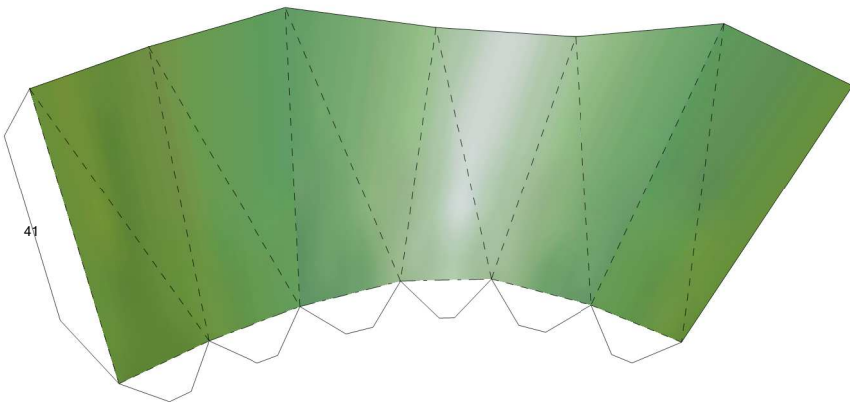
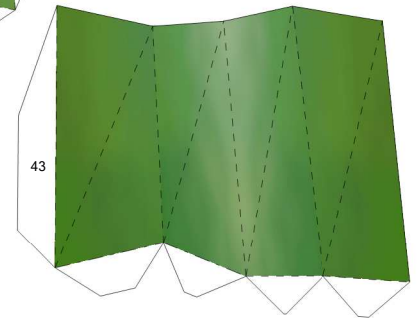
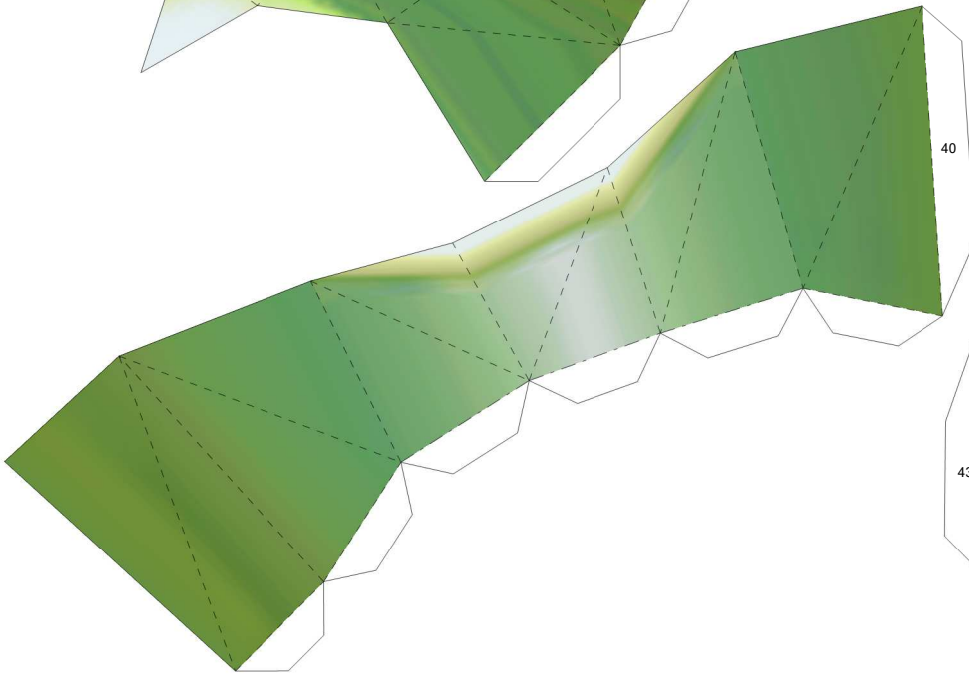
Be carefull with the hands, they are the tricky part of the model. Start with the middle finger and work around it. Close the arms at the top and glue them to the torso when the numbers get to them. Don't glue them soon or they will be in the way of the building.

Start the legs at the foot and work them up. Be carefull when gluing the top of the foot, that part can get tricky.





Join the entire set composed with both the legs and piece 26 to the previous built part.



Close at the tip of the tail.